

01-25



PRÄZISIONS-SPANNWERKZEUGE

HIGH PRECISION TOOLHOLDERS



ERRECI
SISTEMI PER PRODURRE



KATALOG CATALOGUE

AMPLIAMENTO HI-TECH MANDRINI 2025

Un'innovazione di prodotto di successo richiede una combinazione di creatività, ricerche di mercato, intuizioni dei clienti, competenze tecnologiche e una gestione efficace del progetto.

È guidata dal desiderio di soddisfare le esigenze dei clienti in continua evoluzione, di essere all'avanguardia rispetto ai concorrenti e di creare una crescita aziendale sostenibile.

All'interno troverete prodotti nuovi che saranno prodotti ed inseriti nel magazzino durante l'anno 2025.

TOOL HOLDER DIN 69871

- Mandrino ER DIN6499
- Mandrino MINI ER DIN6499
- Mandrino SKS
- Mandrino Forte serraggio
- Mandrino Idraulico design compatto
- Set Mandrino idraulico
- Mandrino a calettare con lubrificazione di testa

Tool Holder JIS B 6339

- Mandrino ER DIN6499
- Mandrino MINI ER DIN6499
- Mandrino SKS
- Mandrino Forte serraggio
- Mandrino Idraulico design compatto
- Set Mandrino idraulico
- Mandrino a calettare con lubrificazione di testa

Tool Holder DIN 69893 (ISO 12164) HSK-A

- Mandrino ER DIN6499
- Mandrino MINI ER DIN6499
- Mandrino SKS
- Mandrino Forte serraggio
- Mandrino Idraulico design compatto
- Set Mandrino idraulico
- Mandrino a calettare con lubrificazione di testa

ER Collet Chuck

2025 NEWS

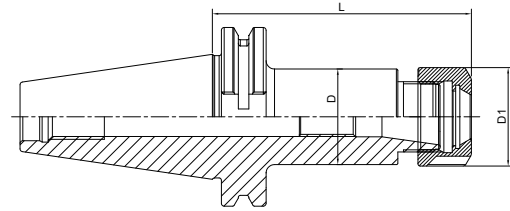
DIN6499

A ≤ 0.003

RPM
G2.5/25000

AD

SK



Code	Size	Capacity	D1	L	D	Euro
402.02.10G25	SK40-ER16-63	1-10	32	63	28	44,20
402.02.16G25	SK40-ER25-70	2-16	42	70	42	44,20
402.02.20G25	SK40-ER32-70	2-20	50	70	40	45,90
402.02.26G25	SK40-ER40-80	3-26	63	80	63	48,50
402.02.10.1G25	SK40-ER16-100	1-10	32	100	28	49,30
402.02.16.1G25	SK40-ER25-100	2-16	42	100	42	55,30
402.02.20.1G25	SK40-ER32-100	2-20	50	100	50	55,30
402.02.26.1G25	SK40-ER40-100	3-26	63	100	63	62,90

Versione aggiornata

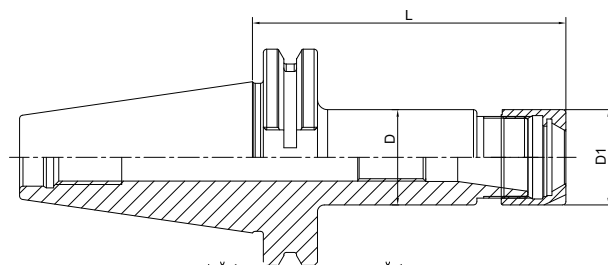
ER MINI Collet Chuck

DIN6499

A ≤ 0.003

RPM
G2.5/25000

AD

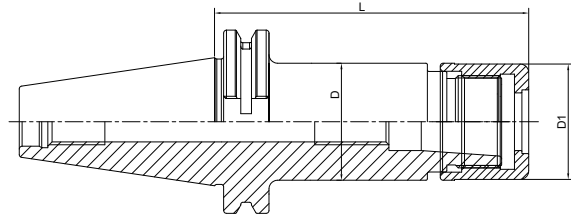


Code	Size	Capacity	D1	L	D	Euro
403.02.07.1	SK40-ER11M-100	1-7	16	100	16	93,50
403.02.07.2	SK40-ER16M-100	1-10	22	100	22	107,10
403.02.07.10.1	SK40-ER11M-160T	1-7	16	160	16	93,50
403.02.07.10.2	SK40-ER16M-160T	1-10	22	160	22	107,10

High Speed SKS Collet Chuck

SK

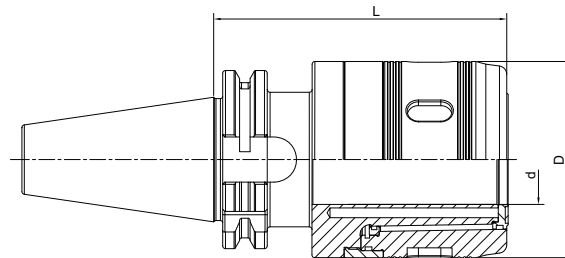
A ↗ ≤0.003	RPM G2.5/25000	AD
---------------	-------------------	----



Code	Size	Capacity	L	D	D1	Euro
402.03.10	SK40-SKS10-60	2-10	60	27.5	27.1	102,00
402.03.10.1	SK40-SKS10-90	2-10	90	27.5	27.1	109,65
402.03.10.2	SK40-SKS10-120	2-10	120	27.5	27.1	117,30
402.03.16	SK40-SKS16-60	3-16	60	40.6	40	103,70
402.03.16.1	SK40-SKS16-90	3-16	90	40.6	40	111,35
402.03.16.2	SK40-SKS16-120	3-16	120	40.6	40	119,00

Power Milling Chuck

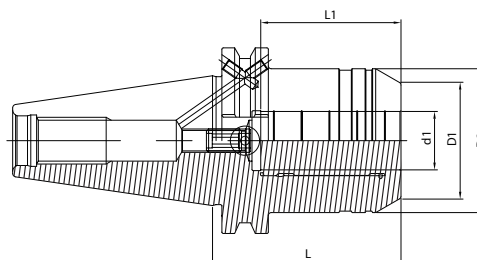
A ↗ ≤0.008	RPM G6.3/15000	AD
---------------	-------------------	----



Code	Size	Capacity	d	D	L	Euro
403.64.20	SK40-HC20	3-16	20	50	85	192,95
403.64.32	SK40-HC32	3-25	32	72	105	203,15

Hydraulic Chuck, Power Design, version short

A ↗ ≤0.003	RPM G2.5/25000	AD
---------------	-------------------	----



Code	Size	d1	D2	L	L1	G	Euro
403.H20C	SK40-HYP20-64.5	20	41	64.5	51	M8x1	247.10

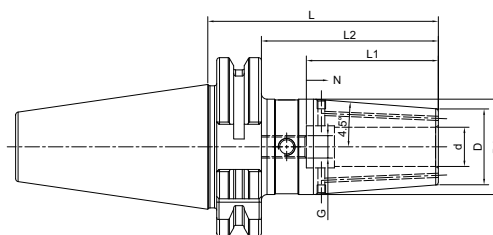
Hydraulic Collet Set



Code	Hydraulic chuck	Hydraulic Collet	key Size	Euro
403.H20SRD	SK40-HY20-80.5	HY20-6.8.10.12.16	5L	370.00

Shrink Fit Chuck, 4.5°, Coolant

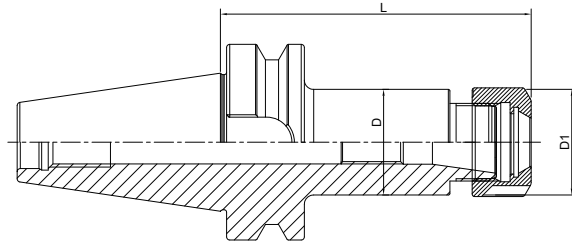
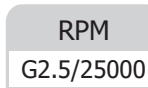
A ↗ ≤0.003	RPM G2.5/25000	AD/B
---------------	-------------------	------



Code	Size	d	L	D	D1	L2	L1	N	G	Euro
403.70.06.K	SK40-SF06-80K	6	80	21	27	60.9	36	10	M5	109,65
403.70.08.K	SK40-SF08-80K	8	80	21	27	60.9	36	10	M6	109,65
403.70.10.K	SK40-SF10-80K	10	80	24	32	60.9	42	10	M8x1	109,65
403.70.12.K	SK40-SF12-80K	12	80	24	32	60.9	47	10	M10x1	109,65
403.70.16.K	SK40-SF16-80K	16	80	27	34	60.9	50	10	M12x1	109,65
403.70.20.K	SK40-SF20-80K	20	80	33	42	60.9	52	10	M16x1	109,65

BRIGHTTOOLS
ER Collet Chuck

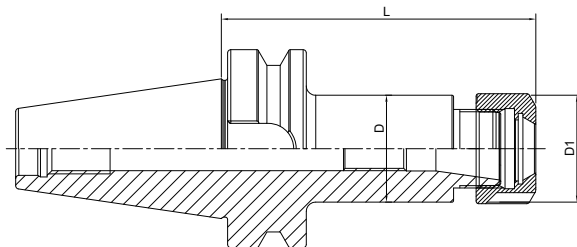
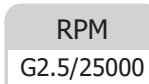
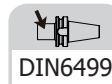
BT



Code	Size	Capacity	D1	L	D	Euro
405.02.10G25	BT40-ER16-70	1-10	32	63	28	44,20
405.02.16G25	BT40-ER25-70	2-16	42	70	42	44,20
405.02.20G25	BT40-ER32-70	2-20	50	70	40	45,90
405.02.26G25	BT40-ER40-80	3-26	63	80	63	48,50
405.02.10.1G25	BT40-ER16-100	1-10	32	100	28	49,30
405.02.16.1G25	BT40-ER25-100	2-16	42	100	42	55,30
405.02.20.1G25	BT40-ER32-100	2-20	50	100	50	55,30

Versione aggiornata

BRIGHTTOOLS
ER MINI Collet Chuck



Code	Size	Capacity	D1	L	D	Euro
406.02.07.1	BT40-ER11M-100	1-7	16	100	16	93,50
406.02.07.2	BT40-ER16M-100	1-10	22	100	22	107,10
406.02.07.10.1	BT40-ER11M-160T	1-7	16	160	16	93,50
406.02.07.10.2	BT40-ER16M-160T	1-10	22	160	22	107,10

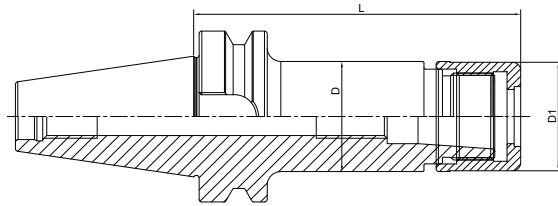
High Speed SKS Collet Chuck



A ↗
≤0.003

RPM
G2.5/25000

AD
AD



Code	Size	Capacity	L	D	D1	Euro
405.03.10	BT40-SKS10-60	2-10	60	27.5	27.1	102,00
405.03.10.1	BT40-SKS10-90	2-10	90	27.5	27.1	109,65
405.03.10.2	BT40-SKS10-120	2-10	120	27.5	27.1	117,30
405.03.16	BT40-SKS16-70	3-16	60	40.6	40	103,70
405.03.16.1	BT40-SKS16-90	3-16	90	40.6	40	111,35
405.03.16.2	BT40-SKS16-120	3-16	120	40.6	40	119,00

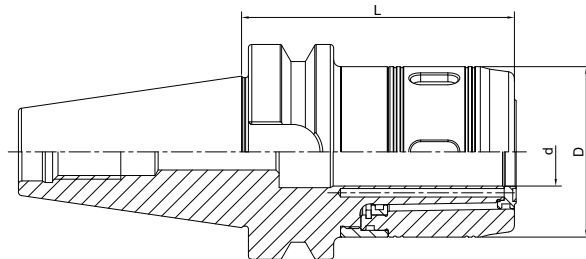
Power Milling Chuck



A ↗
≤0.008

RPM
G6.3/15000

AD
AD



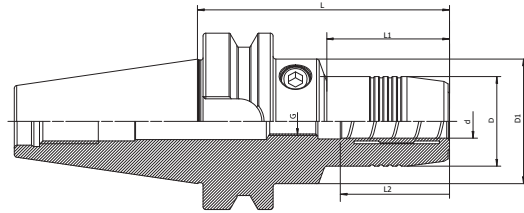
Code	Size	Capacity	d	D	L	Euro
406.64.20	BT40-HC20	3-16	20	50	85	192.95
406.64.32	BT40-HC32	3-25	32	72	105	203.15

Hydraulic Chuck, Power Design

BT



A ↗ ≤0.003	RPM G2.5/25000	AD
---------------	-------------------	----



Code	Size	d1	D2	L	L1	G	Euro
406.H20C	SK40-HYP20-72.5	20	41	72.5	51	M8x1	247.10

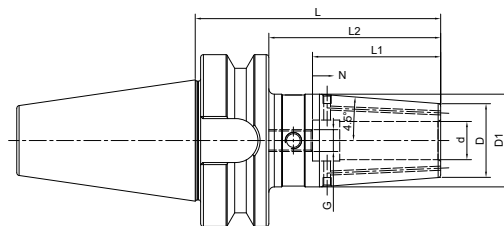
Hydraulic Collet Set



Code	Hydraulic chuck	Hydraulic Collet	key Size	Euro
406.H20SRD	BT40-HY20-90	HY20-6.8.10.12.16	5L	370,00

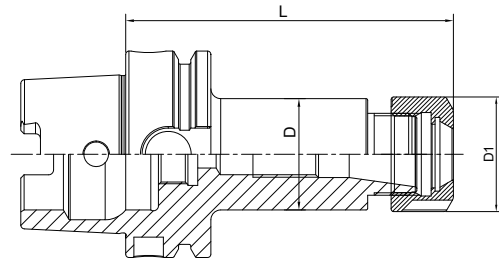
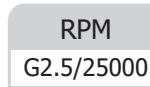
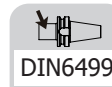
Shrink Fit Chuck, 4.5°, Coolant

A ↗ ≤0.003	RPM G2.5/25000	AD
---------------	-------------------	----



Code	Size	d	L	D	D1	L2	L1	N	G	Euro
406.70.06.K	BT40-SF06-90K	6	80	21	27	60.9	36	10	M5	109,65
406.70.08.K	BT40-SF08-90K	8	80	21	27	60.9	36	10	M6	109,65
406.70.10.K	BT40-SF10-90K	10	80	24	32	60.9	42	10	M8x1	109,65
406.70.12.K	BT40-SF12-90K	12	80	24	32	60.9	47	10	M10x1	109,65
406.70.16.K	BT40-SF16-90K	16	80	27	34	60.9	50	10	M12x1	109,65
406.70.20.K	BT40-SF20-90K	20	80	33	42	60.9	52	10	M16x1	109,65

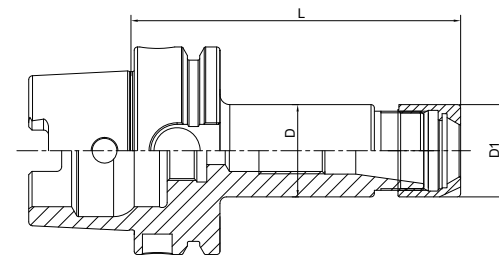
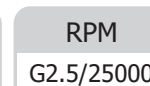
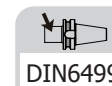
ER Collet Chuck



Code	Size	Capacity	D1	L	D	Euro
A63.02.10	HSK63A-ER16-100	1-10	32	100	28	92,00
A63.02.16	HSK63A-ER25-100	1-16	42	100	42	92,00
A63.02.20	HSK63A-ER32-100	2-20	50	100	50	92,00
A63.02.26	HSK63A-ER40-120	3-26	63	120	50	98,90
A63.02.10.1	HSK63A-ER16-160	1-10	32	160	28	117,90
A63.02.16.1	HSK63A-ER25-160	1-16	42	160	42	117,90
A63.02.20.1	HSK63A-ER32-160	2-20	50	160	50	117,90
A63.02.26.1	HSK63A-ER40-160	3-26	63	160	50	128,80

Versione aggiornata

ER MINI Collet Chuck



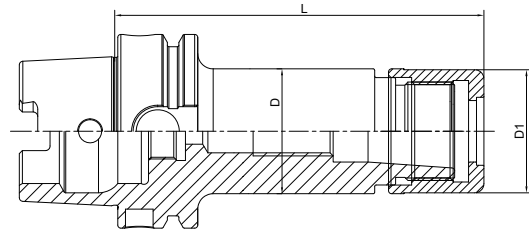
Code	Size	Capacity	D1	L	D	Euro
A63.02.07.1	HSK63A-ER11M-100	1-7	16	100	16	138,55
A63.02.07.2	HSK63A-ER16M-100	1-10	22	100	22	158,10
A63.02.07.10.1	HSK63A-ER11M-160T	1-7	16	160	16	138,55
A63.02.07.10.2	HSK63A-ER16M-160T	1-10	22	160	22	158,10

High Speed SKS Collet Chuck

HSK



A ↗	RPM	AD
≤0.003	G2.5/25000	AD

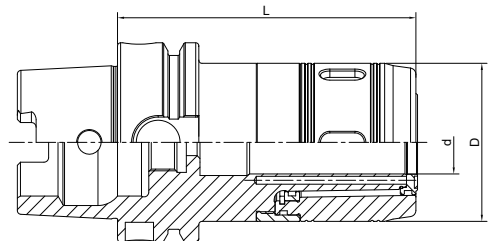


Code	Size	D	D1	L	Capacity	M	Euro
A63.03.10	HSK63A-SKS10-90	27.5	27.1	90	2-10	M21.5*1	87,40
A63.03.10.2	HSK63A-SKS10-120	27.5	27.1	120	2-10	M21.5*1	93,15
A63.03.16	HSK63A-SKS16-90	40.6	40	90	3-16	M32*1.5	87,40
A63.03.16.2	HSK63A-SKS16-120	40.6	40	120	3-16	M32*1.5	93,15

Power Milling Chuck



A ↗	RPM	AD
≤0.008	G6.3/15000	AD

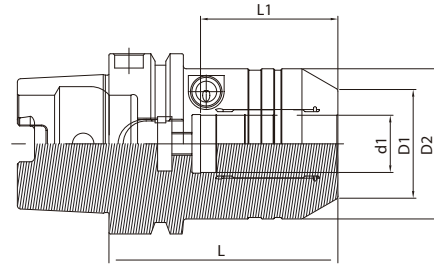


Code	Size	d	D	L	Capacity	Euro
A63.64.20	HSK63A-HC20-100	20	50	100	3-16; 20	287,30
A63.64.32	HSK63A-HC32-120	32	72	120	3-25; 32	295,80

Hydraulic Chuck, Power Design



A ↗ ≤0.003	RPM G2.5/25000	AD
---------------	-------------------	----



HSK

Code	Size	d1	D2	L	L1	G	Euro
A63.H20C	HSK63A-HYP20-80	20	33	112	80	M8x1	313.20

Hydraulic Collet Set

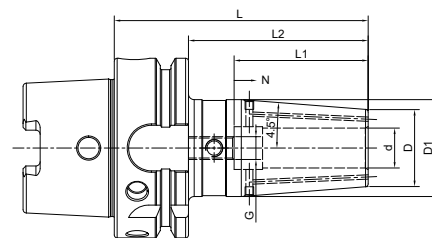


Code	Hydraulic chuck	Hydraulic Collet	key Size	Euro
A63.H20SRD	HSK63A-HY20-90	HY20-6.8.10.12.16	5L	420.00

Shrink Fit Chuck, 4.5°, Coolant



A ↗ ≤0.003	RPM G2.5/25000	AD
---------------	-------------------	----



Code	Size	d	L	D	D1	L2	L1	N	G	Euro
A63.70.06.K	HSK63A-SF06-80K	6	80	21	26.5	54	36	10	M5	147,05
A63.70.08.K	HSK63A-SF08-80K	8	80	21	26.5	54	36	10	M6	147,05
A63.70.10.K	HSK63A-SF10-85K	10	85	24	30.5	59	42	10	M8x1	147,05
A63.70.12.K	HSK63A-SF12-90K	12	90	24	31	64	47	10	M10x1	147,05
A63.70.16.K	HSK63A-SF16-95K	16	95	27	34	69	50	10	M12x1	147,05
A63.70.20.K	HSK63A-SF20-100K	20	100	33	42	74	52	10	M16x1	147,05

ERRECI

SISTEMI PER PRODURRE

www.errecimp.it

info@errecimp.it

Präzisions-Spannwerkzeuge

HIGH PRECISION TOOLHOLDERS



Distributore di zona

